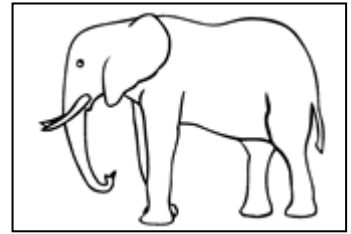


NOM

L'ÉLÉPHANT



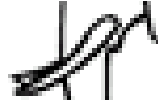
DESCRIPTION



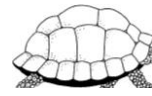
un bec



des ailes



deux défenses



une carapace



des plumes



une peau craquelée



des oreilles



des pattes

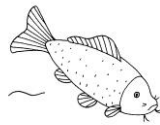


une trompe



des nageoires

FAMILLE



poissons



insectes

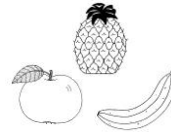
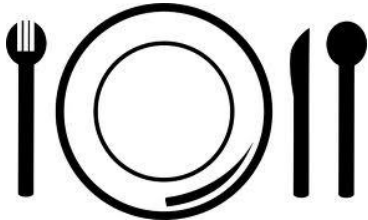


mammifères

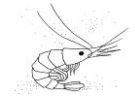


reptiles

NOURRITURE



fruits



crevettes



sucre



insectes



herbe



feuille



gâteaux

MODE DE DÉPLACEMENT



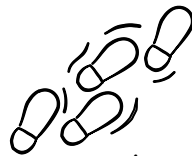
vole



nage



rampe



marche



saute

REPRODUCTION

